



# THE BRAND

Technocrats | Quality | Trust | Commitment  
Internal standards Young India



**IBRIJ**  
MACHINES



# WHAT WE ARE ?

- Founded in 1987 as small Engineering workshop located at GIDC, Halol start with job work / machining work with conventional Lathe machine, shaping machine & Drilling machine.
- In 1992 Increased the capacity and demand of the New engineering requirements Upgraded to new generation machines by adding New series of Lathe Machines, milling machines, Radial Drill machines..
- In 2013 Qualified young India came in with new Ideas and diversified to manufacturing of Sheet metal Components using Power press machines by adding new generation Power press machines.
- In 2019 we came with New Brand called Brij Machines India focusing on our spatiality of Manufacturing Sheet metal Components along with our long Engineering Experience and Highly Technical Efficient Team.
- **QUALITY POLICY**  
Towards to achieve the goal of total quality, the Company is ISO certified for manufacturing sheet metal pressed components.

PRODUCTS/SERVICES  
**CLAMPS**

We Make Customized Clamps  
as per Requirement / Design



**PIPE CLAMP**



**POLE CLAMP**



**SPRING CLAMP - LONG**



**SPRING CLAMP - LONG**



**U – CLAMP SQUARE BEND**



**U – CLAMP V - SHAPED**



**CLAMP NAMASTE**



**PARABOLIC  
SUSPENSION CLAMP**



**LEAFSPRING  
CLAMP UNIVERSAL**



PRODUCTS/SERVICES

# SHEET METAL COMPONENTS

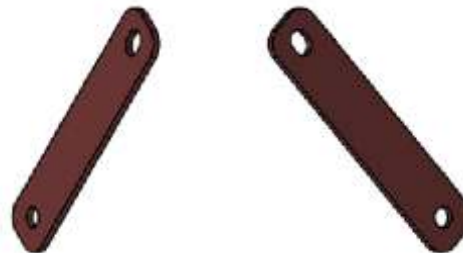
We Make Customized Sheet Metal Components  
as per Requirement / Design



**MS/SS L – CLAMP**



**CU/AL/MS SUPPORT STRIP**



**COPPER SUPPORT STRIP**



**AL/SS SUPPORT STRIP**



**L BRACKET COPPER**



**LEAF SPRING CLAMPS**



**L BRACKETS**



**MS/SS ANGLE BRACKET**



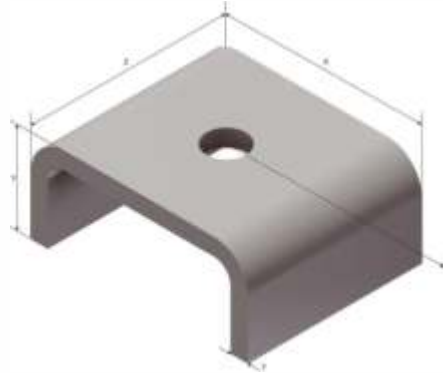
**MS/SS ANGLE BRACKET**



**MS/SS FLAT WASHER**



**MS/SS UNISTURT CHANNEL WASHER**



**MS/SS LIPPED SQUARE WASHER**



**MS/SS SQUARE WASHER**



**SQUARE SPRING WASHER**



**SQUARE SPRING WASHER**





**JITESH R PATADIYA**  
CHIEF EXECUTIVE DIRECTOR

AGE : 37 YEARS  
QUAL. : D.P.M., D.I.S.  
EXP. : 17 YEARS IN THE  
FIELD OF HEAVY ENGINEERING  
CONSTRUCTION MACHINARIES.



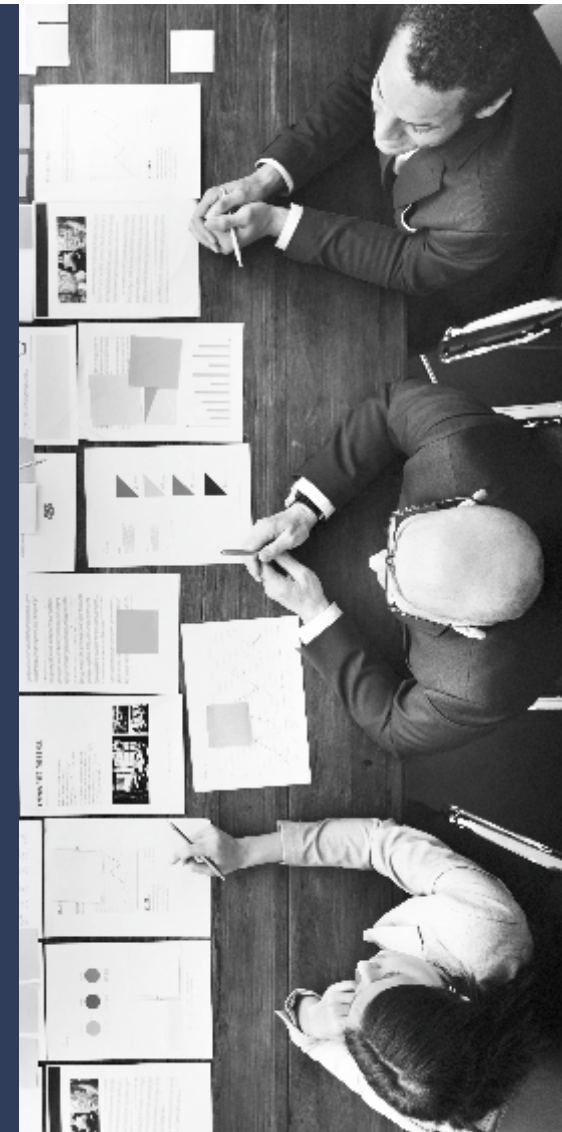
**BHAVIN P PANCHAL**  
PRESIDENT FINANCE  
& OVERSEAS BUSINESS

AGE : 39 YEARS  
QUAL. : D.P.E., B.E.CHEM.  
EXP. : 19 YEARS IN THE  
FIELD OF OIL & GAS FIELD,  
REFINERY INDUSTRY.



**TEJAS R PATEL**  
DIRECTOR - OPERATIONS

AGE : 35 YEARS  
QUAL. : D.M.E.  
EXP. : 15 YEARS IN THE  
FIELD OF MANUFACTURING  
MECHNICAL ENGINEERING.



FACILITY  
**TOOL ROOM  
MACHINE SHOP**

**IT** Machine shop Equipped with Latest, Robust and Well Maintained 16 nos. various type of machines Which Includes ....



**4 × Turning Lathe**



**1 × Shaping machine**



**2 × Universal milling**



**1 × Slotting machine**



**1 × Radial Drill**



**2 × Pillar Drill**



**2 × Bench Grinder**



**1 × Welding machine**



**1 × Hand Fly Press**



**1 × Hydraulic Hacksaw machine**





## FACILITY **PRESS SHOP**

- II** Power Press shop Equipped with Latest, Robust and Advance machines Capacity From 10 tone, 20, 30 to 50 tone.
- II** Processed Metal forming up to 5mm Thickness. In some cases up to 8mm thickness.



# DESIGN & ANALYSIS



In-house Design and Analysis Team for Components, Die & Tools...



We Believe our Strength is Our Highly technocrat Team Whom are Making our Brand Value by Delivering Best Quality products to our Clients.



We Continuously Improving our Process Simple, Easy, Faster to enhance our services and product quality for our clients...



# **IF** FACILITY

**IF** Over 8000 Sq. Ft. Shed Area with fully Equipped of Latest Machineries on separate shop Floor of Press Shop and Tool Room machine shop.

## **IF** STRATEGIC LOCATION

**GIDC - HALOL**

(Automobile & Renewable Energy Hub)

**Dist. Panchmahal, Gujarat, India**



Thank you very much for Giving Valuable Time to View our Profile  
Looking for Opportunity to Serve you...



**Contact Us**

BRIJ MACHINES INDIA  
PLOT NO. C1/703/3, GIDC INDUSTRIAL ESTATE,  
HALOL, DIST. PANCHMAHAL, GUJARAT, INDIA.

T | +91 9824655600  
E | [jitesh.patadiya@brijmach.com](mailto:jitesh.patadiya@brijmach.com)  
E | [tejas.patel@brijmach.com](mailto:tejas.patel@brijmach.com)  
W | [www.brijmach.com](http://www.brijmach.com)