

www.spanker.in

Spanker

DOORS & DOCK SOLUTIONS

Yes, Your entrance Specialist®

**A leading entrance specialist company based at
Changodar, Ahmedabad since 1993**

ROLLFLEX® - RAPID AUTO ROLL DOOR



OVERVIEW

- These doors are most suitable for clean room applications like Food Processing units & Pharmaceutical units as well any other industries, where heavy traffic of movements are there.

- Features & Benefits:

- ❑ Suitable for internal & external application
- ❑ Interchangeable PVC door panel
- ❑ Door Structure made of Aluminium clear matt finish anodized
- ❑ Full height vertical brush seals in door column
- ❑ In line PE Safety sensor & auto reversing safety edge
- ❑ Variable speed control, 0.8mtr/sec to 1.6mtr/sec
- ❑ Dual Height, airlock interlocking
- ❑ Activation options: Programmable radar motion detector, loop detector, remote control, photocell, push button & pull switch



SPECIFICATION

tufflex PVC Panel - Colour Card



Blue



Red



Yellow



Grey



Orange



Black

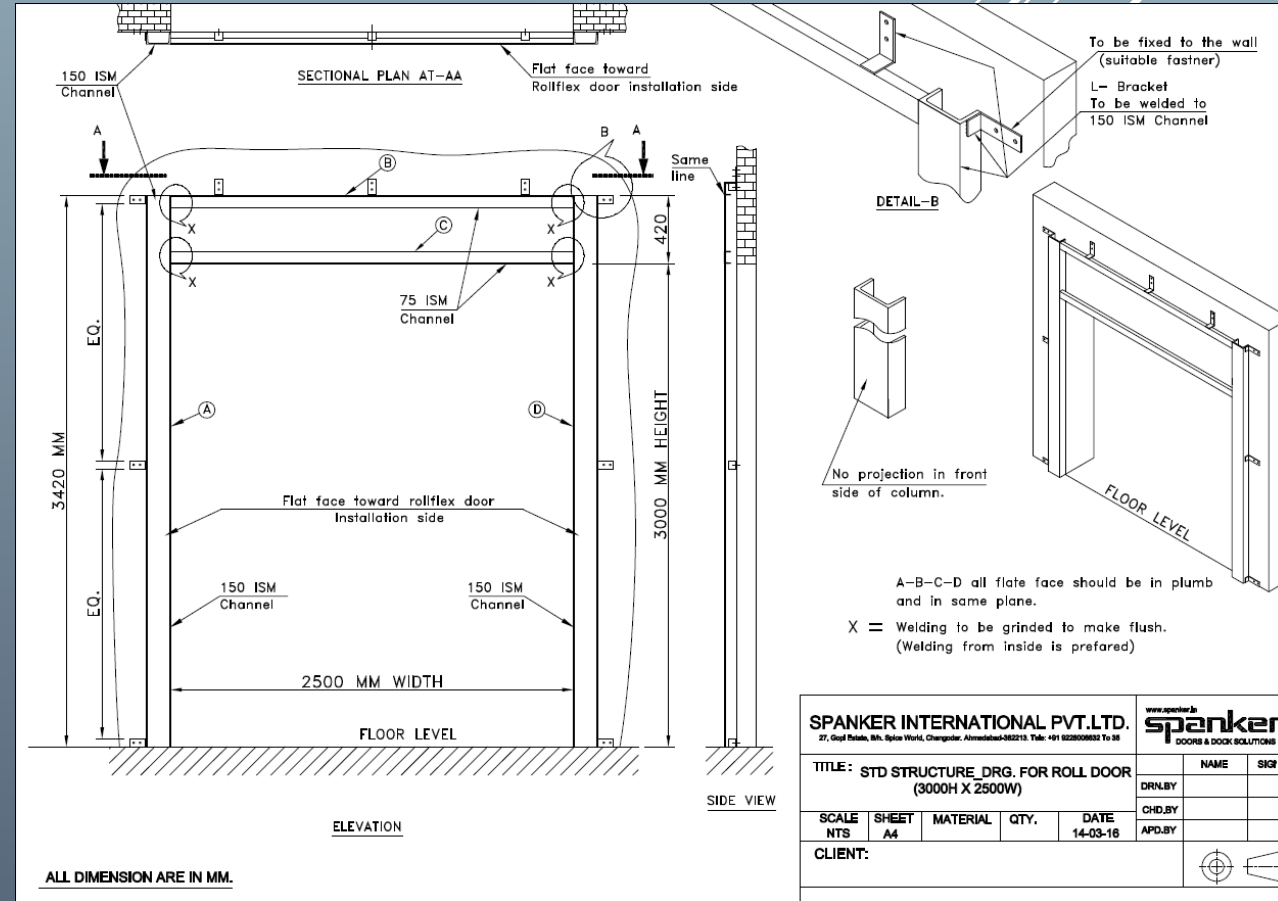
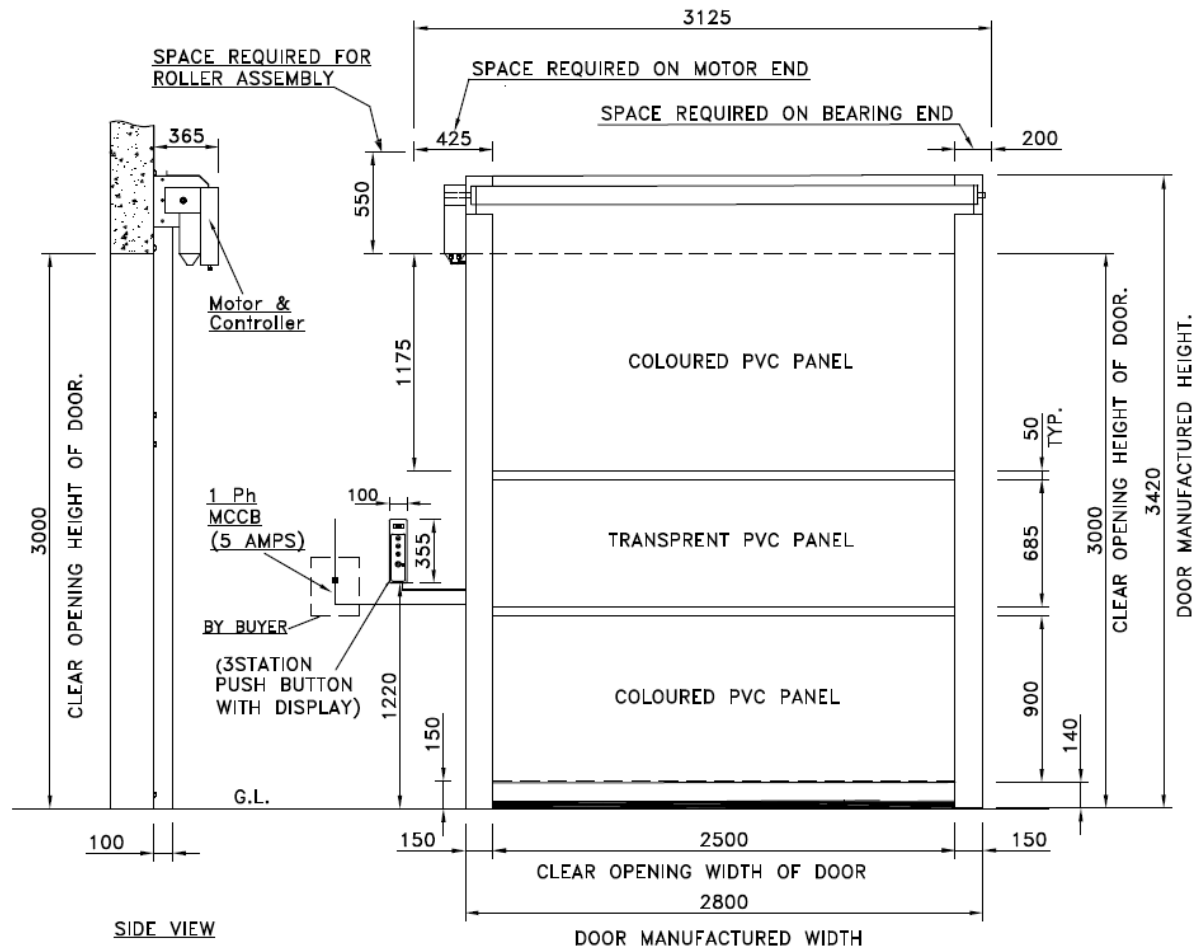
Technical Specification:

- Finish – Both sides lacquered, high gloss
- Flame Retardancy – CERF Category 2
- Total Weight – 900 GSM
- Temperature Range – -30° to +70°C
- Tensile Strength (warp/weft) – 4300 / 4000 N/50 mm
- Tear Strength (warp/weft) – 500/500 N

www.spanker.in

spanker
DOORS & DOCK SOLUTIONS

G.A. & STRUCTURE DRAWING FOR BETTER UNDERSTANDING

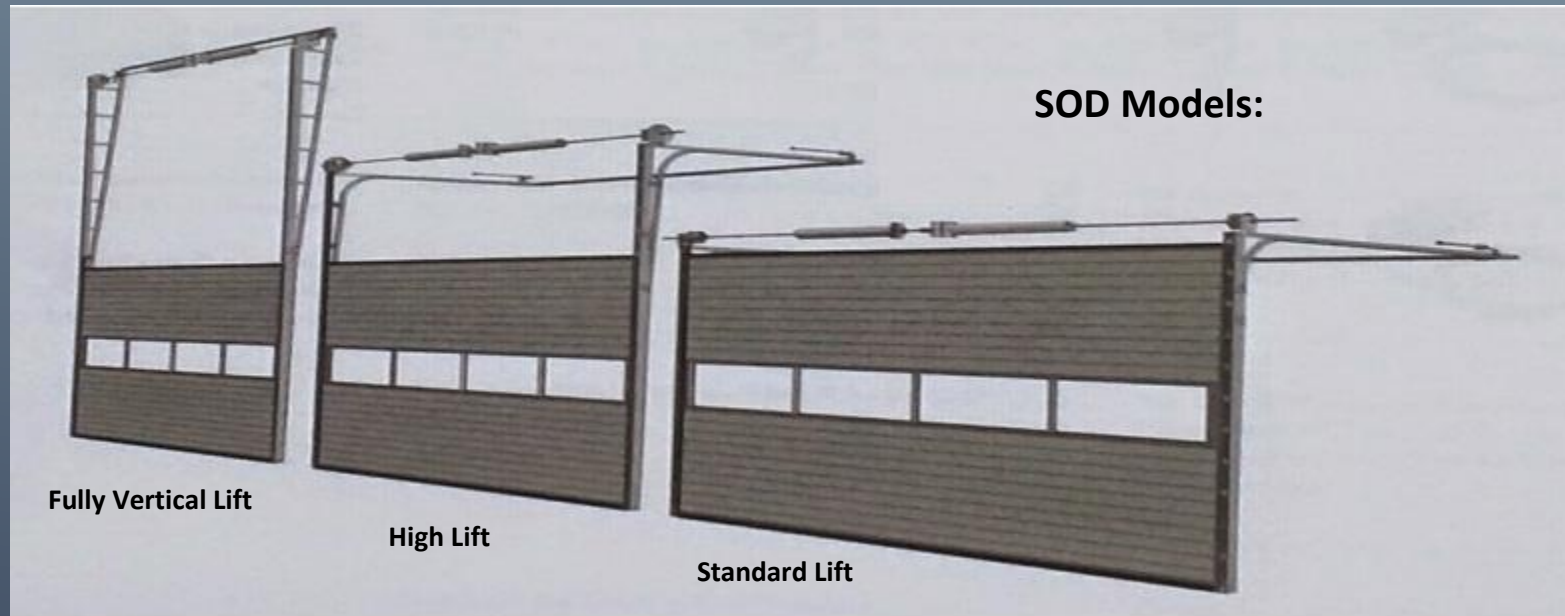


SOD – SECTIONAL OVERHEAD DOOR



OVERVIEW

Sectional Overhead Doors are normally used for shutters in loading-unloading areas and are installed wherever occurs a frequent transit, as the opening-closing time is smaller. All these are delivered provided with manual opening with chain winch or powered. Due to the wide range of models, with different opening configurations, they fit well with any kind of building and always guarantee a perfect functionality and low maintenance.



OVERVIEW

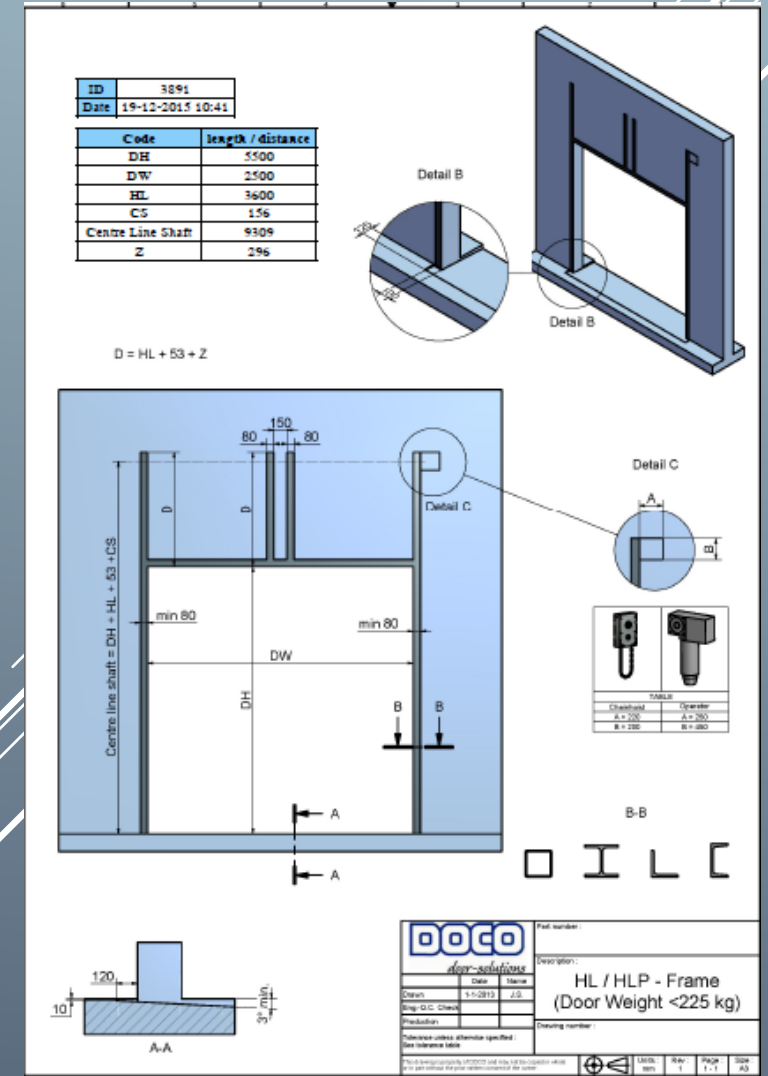
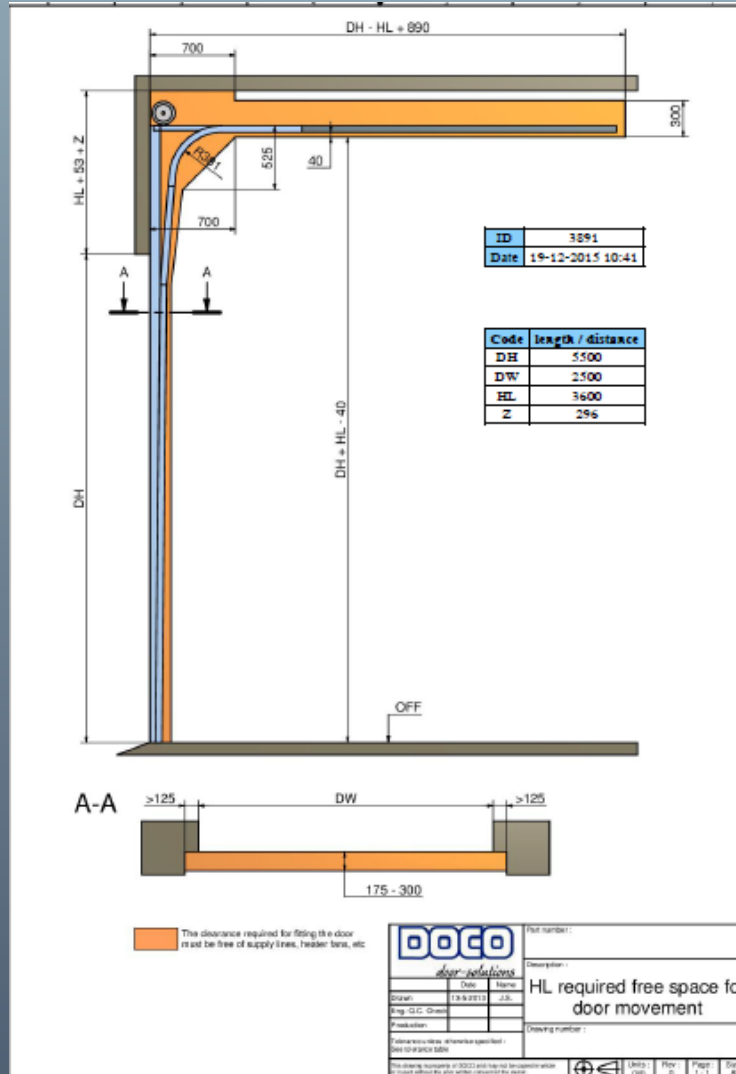
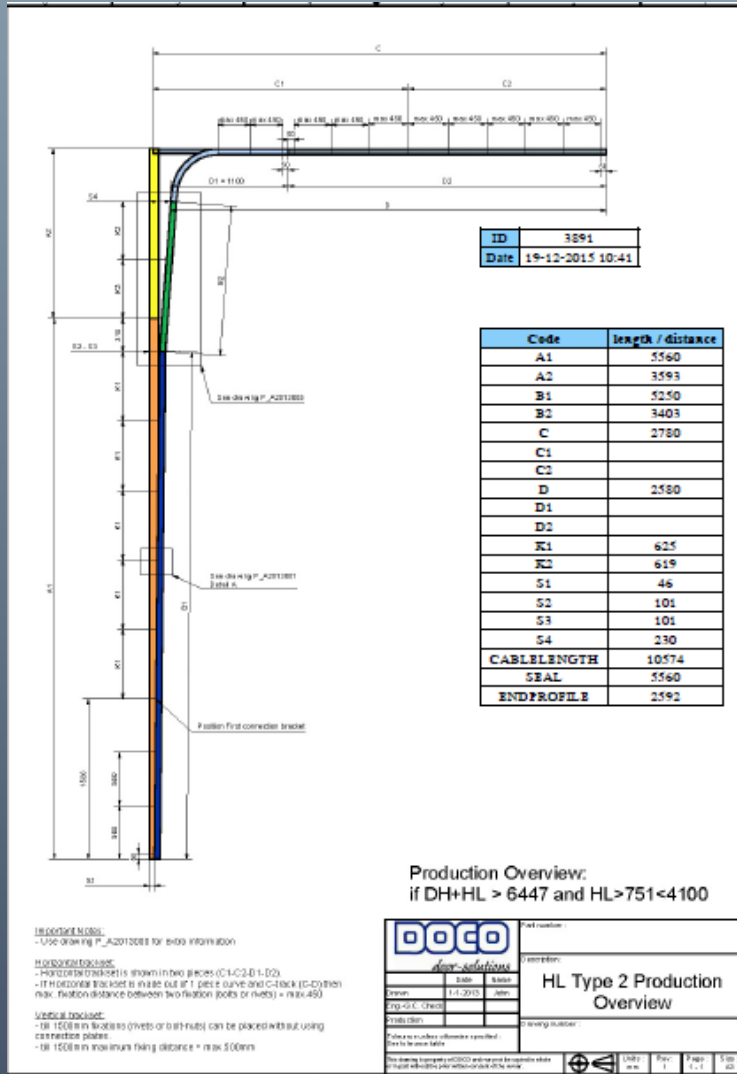
- ❑ Door panels are made from hot galvanized steel with PUF insulation. Nominal thickness of panel is 40mm. Panel height of 600mm as well 480mm. These panels are available in Standard White color (with Stucco finished). Also Available in wide range of colors.
- ❑ Cable & Spring Break safety mechanism & finger safe rollers as standard.
- ❑ Wicket doors with lock and handles fully fitted on requirement. It can be fitted in doors above 3mtr. (H) and upto 5mtr. (w)
- ❑ Designed to comply with European Union Safety Code EN12604, Industrial and Domestic applications.



www.spanker.in

spanker
DOORS & DOCK SOLUTIONS

DRAWINGS FROM DOCO



DOCK SHELTER



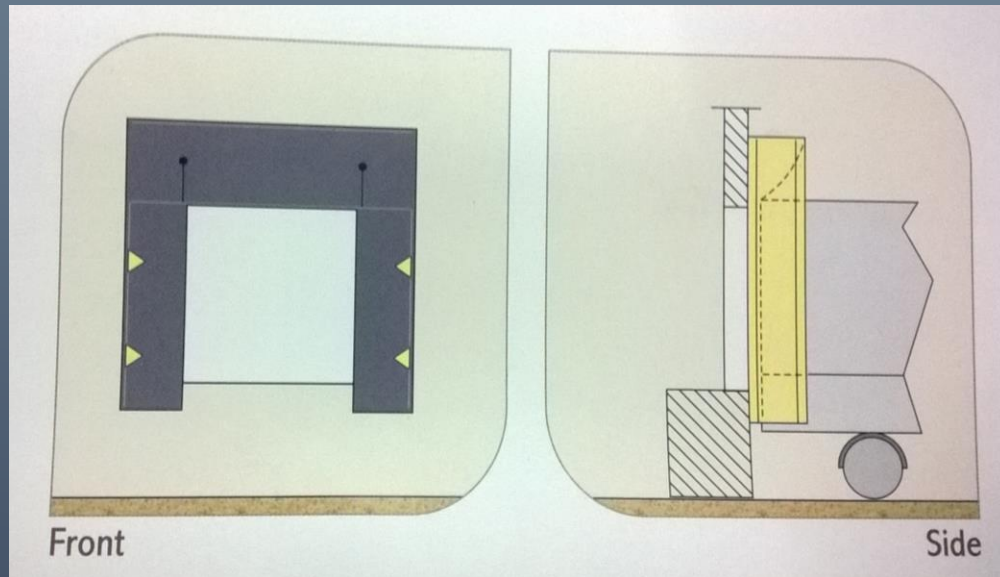
OVERVIEW

Dock Shelter fills gap between Building and Vehicle at the loading point, avoiding expensive temperature variations with respect to the outside of the warehouse. There are several models available according to the structure of the warehouse and the type of goods to handle.

- ❑ Dock Model – standard size 3500H x 3400W
- ❑ Ground Model – standard size 4500H x 3400W
- ❑ Inflatable Dock Shelter (for Specific Application)

FEATURES & BENEFITS

Dock Shelters are made with the covering sheets in Polyester / PVC and the front flaps are made in Thick PVC laminated with two Layers of Polyester fabric. It prevents not only heat exchange but also dust, flying insect and some other pollutions between the inside and the outside of the warehouse. Dock Shelter have the quality of not transmitting the vehicle's force of impact to the warehouse structure.



INFLATABLE DOCK SHELTER

Particularly suitable for sealing loading doors of low temperature refrigerated warehouse, since the inflatable cushion adhere perfectly to the vehicle frames, avoiding costly exchange of temperature between the warehouse and the exterior. It is possible for Inflatable Dock Shelters to adapt transmit the vehicle's force of impact to the warehouse structure.



DOCK SEAL



DOCK SEAL

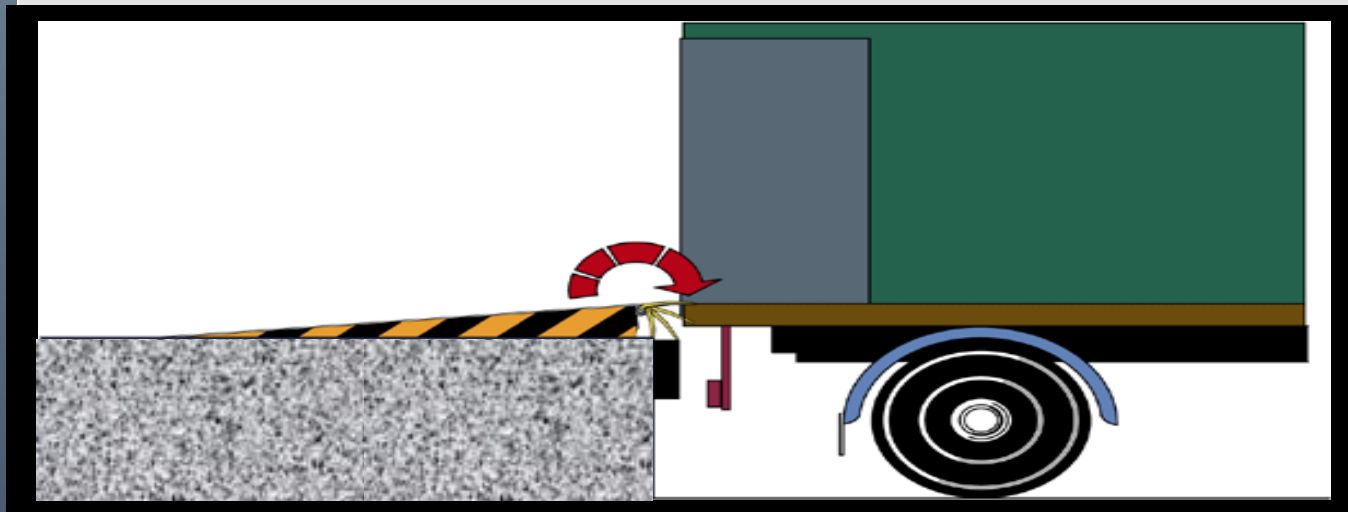
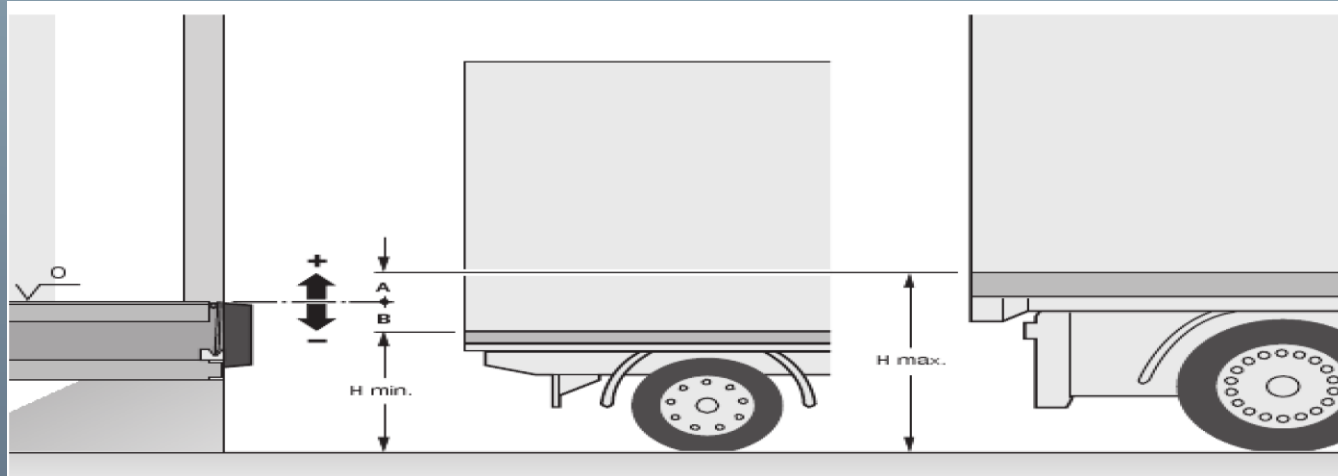
Adapts itself very well to the sealing of loading points on low temperature warehouses. Proper sealing is obtained by pressing the vehicle against cushion filled with closed cell polyurethane, lined with a robust polyester / PVC sheet packed with anti-wear flaps that can limit damage caused by friction and pressure of the vehicle while it is being loaded. Also available with Adjustable Head Cushion Dock Shelter where adjusting height is required due to varying size of vehicle. Dock Seals may transmit the vehicle's force of impact to the warehouse structure.

FEATURES & BENEFITS

Cushioned dock seal offer virtually airtight seal between the vehicle and building.

- ❑ 300mm x 300mm pads filled with closed cell Polyurethane, lined with robust PVC coated Polyester fabric is used.
- ❑ Strong MS frame support structure with waterproof plywood on back.
- ❑ Option of anti-wear flaps that can limit damage caused by friction and pressure of the vehicle which is being loaded.
- ❑ Option of adjustable head cushion with counter balance to adjust for varying height vehicle and bottom pad where dock leveller is not used.
- ❑ Vehicle guide on front side pads in yellow.

DOCK LEVELER:



DOCK LEVELER ADVANTAGES:

- ❑ **Better Secure option in Loading/ Unloading**
- ❑ **Save time in Loading / Unloading.**
- ❑ **Transportation can be possible inside the truck with forklift.**
- ❑ **Safer Loading/ Unloading possible for different size of Vehicles.**
- ❑ **Ease in loading/unloading of goods.**

TRANSFLEX[®] - PVC STRIP DOOR



OVERVIEW

- ❑ Transflex PVC Strip Doors provide an excellent solution to a variety of environmental challenges in the work place.
- ❑ They provide an excellent thermal barrier, keeping the cool and warm air exchange to a minimum therefore dramatically reducing energy cost and providing a more comfortable working environment.
- ❑ These are equally beneficial in very large openings or single doorways.

ADVANTAGES:

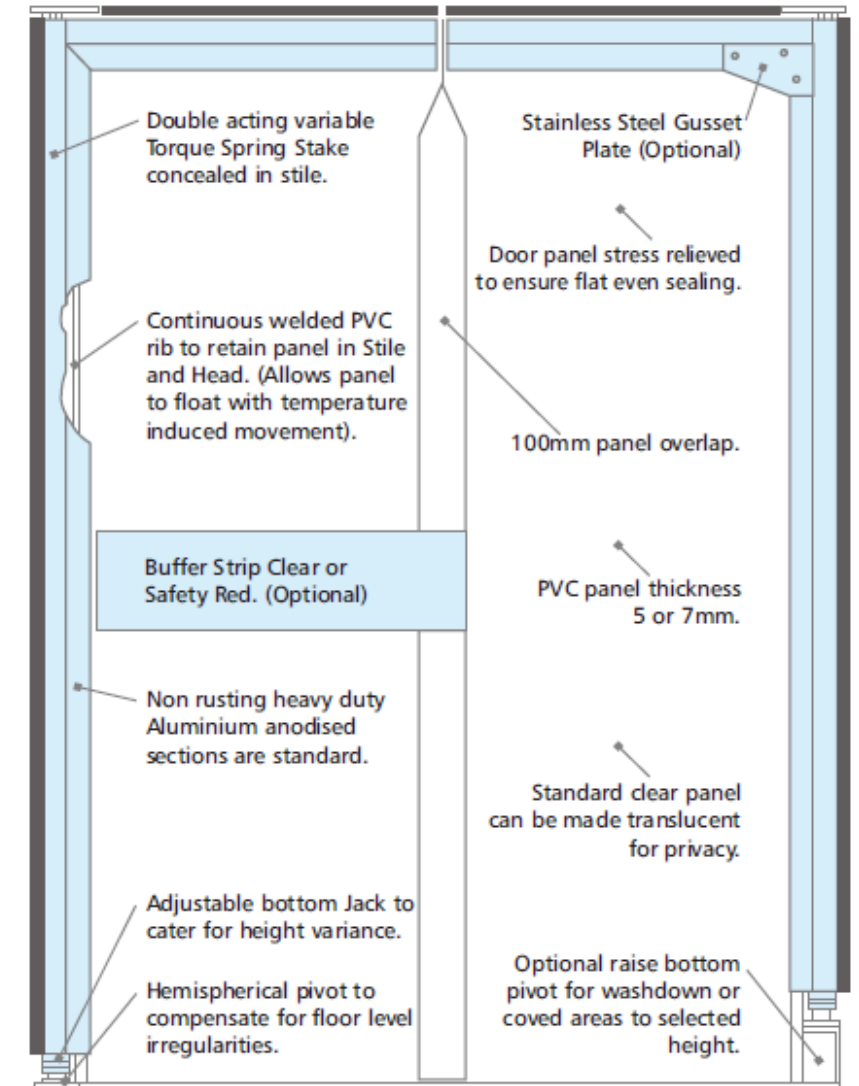
- ❑ Reduces heat or cold air loss
- ❑ Isolates noisy machinery
- ❑ Restricts movement of air pollutants
- ❑ Increases employee comfort
- ❑ Admits light, save time and work
- ❑ Bird and flying insect control
- ❑ Strong and Durable
- ❑ Minimum Maintenance
- ❑ Easy to install

FLEXI DOOR



ADVANTAGES:

- ❑ Suitable for Pedestrian & light vehicle
- ❑ Effective environmental barrier
- ❑ Easy care design
- ❑ See through panels
- ❑ Hands free operation
- ❑ Silent Operation
- ❑ Fully adjustable, concealed spring controls



www.spanker.in

spanker
DOORS & DOCK SOLUTIONS

SOFTWALL



OVERVIEW

Industrial curtain walls are made of PVC. They can be handy and inexpensive ways to divide a huge open space, like a warehouse, into smaller areas. They can be easily slid into place, and just as easily removed.

Features:

- ❑ Softwall Partitions allow the industrial workplace maximum control over dust, noise and other hazards in industries.
- ❑ Providing an economical and faster alternatives to hardwall structures without compromising results.
- ❑ Softwall partition is custom made as requirement and specification.
- ❑ PVC Softwall can be comes sliding track system and overhead door bracket.

WELD SCREEN



OVERVIEW

Superior protection for your arc welding, grinding and flame cutting operations.

Features:

- ❑ Welding curtains shield fellow employees from the flying sparks and hazardous glare for your welding operations.
- ❑ Protect against serious eye damage by screening out harmful UV and near UV rays.
- ❑ Welding curtains allow easy access to personal, trolleys and equipment from any point through the enclosure.
- ❑ Best suitable for temporary protection in areas nearby aisles or welding areas.
- ❑ Heavy duty PVC 1 mm thick in weld screen and 3 mm thick in welding curtains.
- ❑ Choice of 3 colors aztec red, amber and dark green.

Thank you.



Spanker International Pvt. Ltd.

27, Gopi Estate, Nr. Spice World,

Changodar, Ahmedabad – 382213

Phone: +91 99099 63333 / 34

Email: inquiry@spanker.in, sales@spanker.in

Web: www.spanker.in

www.spanker.in
spanker
DOORS & DOCK SOLUTIONS